

Date: February 25, 1975

Revised: March 10, 1975

MODEL: DN180-5

SUBJECT: Converting the DN180-5 Serpentine to the Adaptable Vender.

ORDER AS: B/M168,010,100.04

DO THIS:

1. Remove Serpentine delivery chute by removing two (2) wing nuts, one (1) at each end of chute.
2. Remove two (2) chute mounting brackets.
3. Unplug vend mechanism wiring harness from lower left hand corner of cabinet. Release clamps holding harness along bottom of cabinet. Remove plate securing harness thru front of cabinet. Save this plate and the two (2) screws securing it.
4. Remove either one (1) or two (2) screws each side securing the vend stack to sides of tank.
5. Remove vend stack.
6. Remove two (2) stack supports, held to tank sides with four (4) screws each at bottom of tank. It will be necessary to loosen the fan housing assembly to gain access to these screws. Leave fan loose until step 9 is complete.
7. Remove temperature control from its mounting bracket by pulling off knob and removing two (2) screws. Save the two (2) screws. Remove temperature control mounting bracket.
8. Unplug and remove relay box from inside of inner door. Save the four (4) mounting screws.
9. Install the four (4) Adaptable stack supports by drilling two (2) 1/8 (.125) holes in tank for each support. Locate stack supports as shown in Fig. 1. The stack support with the added welded plate, for temperature control, is located at the front right side. Install stack supports using eight (8) #10 x 3/4 sheet metal screws and #10 flat washers. Later venders have tapped holes in the locations specified in Fig. 1. Should your particular vender have these tapped holes, assemble the four (4) stack supports to the tank using the #10-32 x 5/8 machine

- screws and the large dome type #10 lockwasher. Reassemble temperature control with two (2) screws and replace knob. Secure fan housing previously loosened.
10. Install lower chute bracket, B147,074,400.73 with four (4) #8 x 1/2 sheet metal screws into four (4) pre-drilled holes in tank bottom near the front center of tank. (See Fig. 2 for hole location and size if the holes are not pre-drilled on this particular vender.)
 11. Place the new Adaptable vend stack on the four (4) supports. Stack must be pushed to back of tank.
 12. At the back of the stack in columns 2 and 4 are two (2) hat sections. Drill two (2) 1/8 dia. holes in the back of the tank using the top holes in the hat sections as a guide. Install two (2) #10 x 3/4 sheet metal screws to secure stack to back of tank.
 13. At the top front of the stack are two (2) angles. Loosen the screw securing these angles to the stack. Push the angles tightly against the tank top and tighten these screws. Using the hole in the angles as a guide, drill two (2) 1/8 dia. holes in the tank top. Install two (2) #10 x 3/4 sheet metal screws to secure stack to top of tank.
 14. Route the vend mechanism wiring harness thru the opening at front bottom of cabinet. Replace plate removed in step 3, to secure harness. Press the permagum around cable for seal. Route harness thru two (2) cable clamps and plug into mating connectors at lower left hand corner of cabinet. Two (2) 3/4" cable clamps are included in this kit. Use these to hold the vend mechanism harness to the right side of the tank. Secure clamps to tank wall with #10 x 3/4 sheet metal screws. Drill a 1/8 dia. hole for the screws.
 15. Fig. 3 shows how the bottle chute mates with the rear plate of the mechanism. The elongated slot in the bracket on the bottle chute goes over the threaded stud on the lower chute bracket installed in step 10. Secure the chute to the lower chute bracket with the large #10 lockwasher and the #10 hex nut. Before tightening nut, close the door. Look thru discharge opening in door and adjust chute so that it is 1/8" (max.) above discharge port in door. Open door and tighten #10 hex nut. To the left of this nut is a hole in the bracket attached to the chute. Using this hole as a guide drill a 9/64 hole thru the chute bracket attached to the tank bottom and install a #8 x 1/2 sheet metal screw.

16. Install the new relay box on the inside of the inner door using the screws from the old relay box removed in step 8. Plug relay box into adjacent mating connector.
17. Peel the backing from the back of the wiring diagram and affix over top of the original Serpentine wiring diagram.
18. Refer to Fig. 4 for inverting discharge member, closure strip and assembling bumper assembly.
19. Behind the opening "For Pull Rings" is a bracket with three (3) pop rivets in a triangular configuration. Using a 9/64 dia. drill remove the three (3) rivets. Install the opener with three (3) 10-32 x 3/4 machine screws in these holes.
20. Remove the paper backing from the metallic label "Opener" and affix over the old label "Pull Rings".
21. Refer to instructions and shim requirements supplied with kit for proper adjustments to vender.

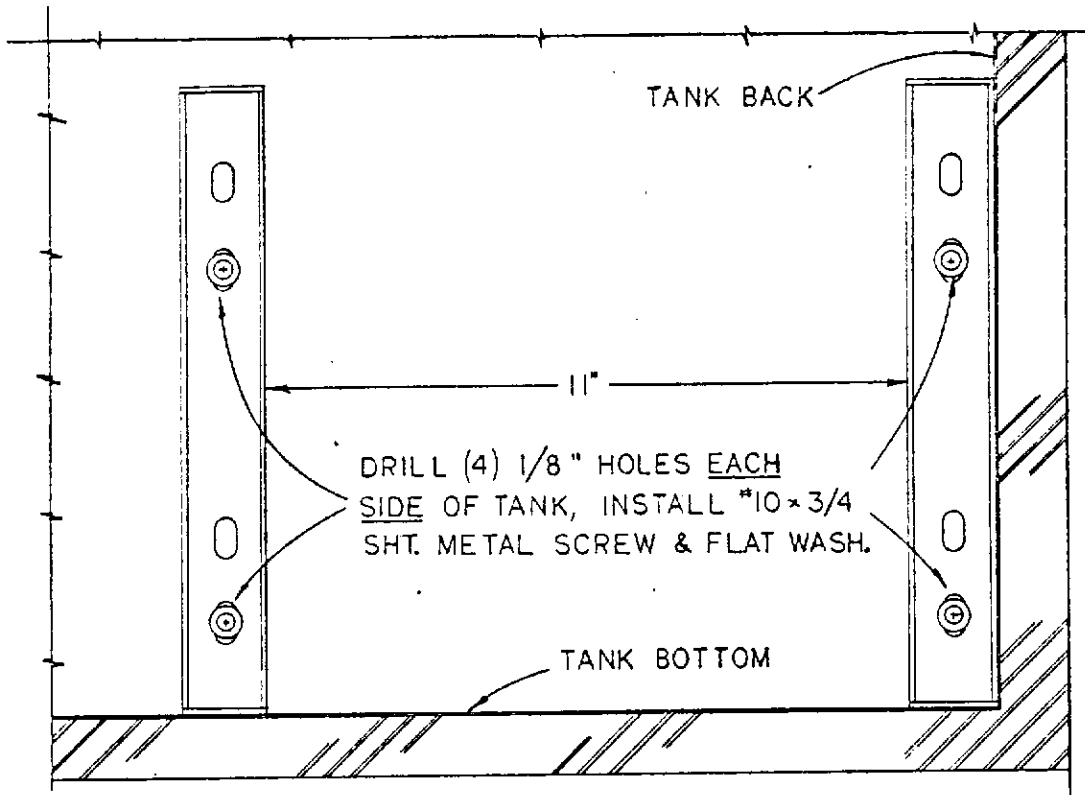


FIG. 1

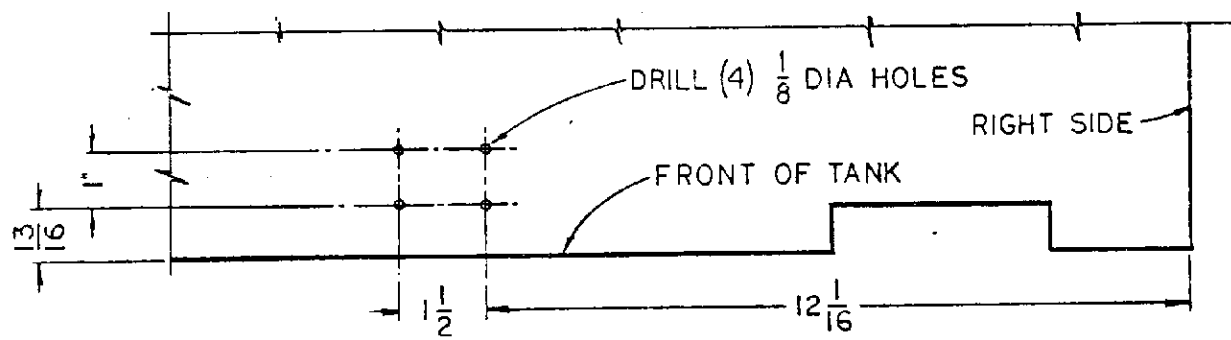


FIG. 2

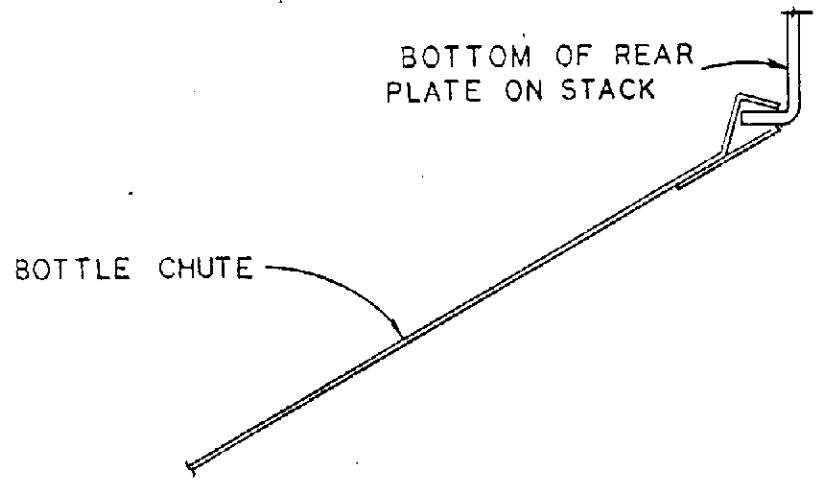


FIG. 3

SECURITY WHEN VENDING CANS. TO VENDING BOTTLES REFER TO INSTRUCTIONS BELOW.

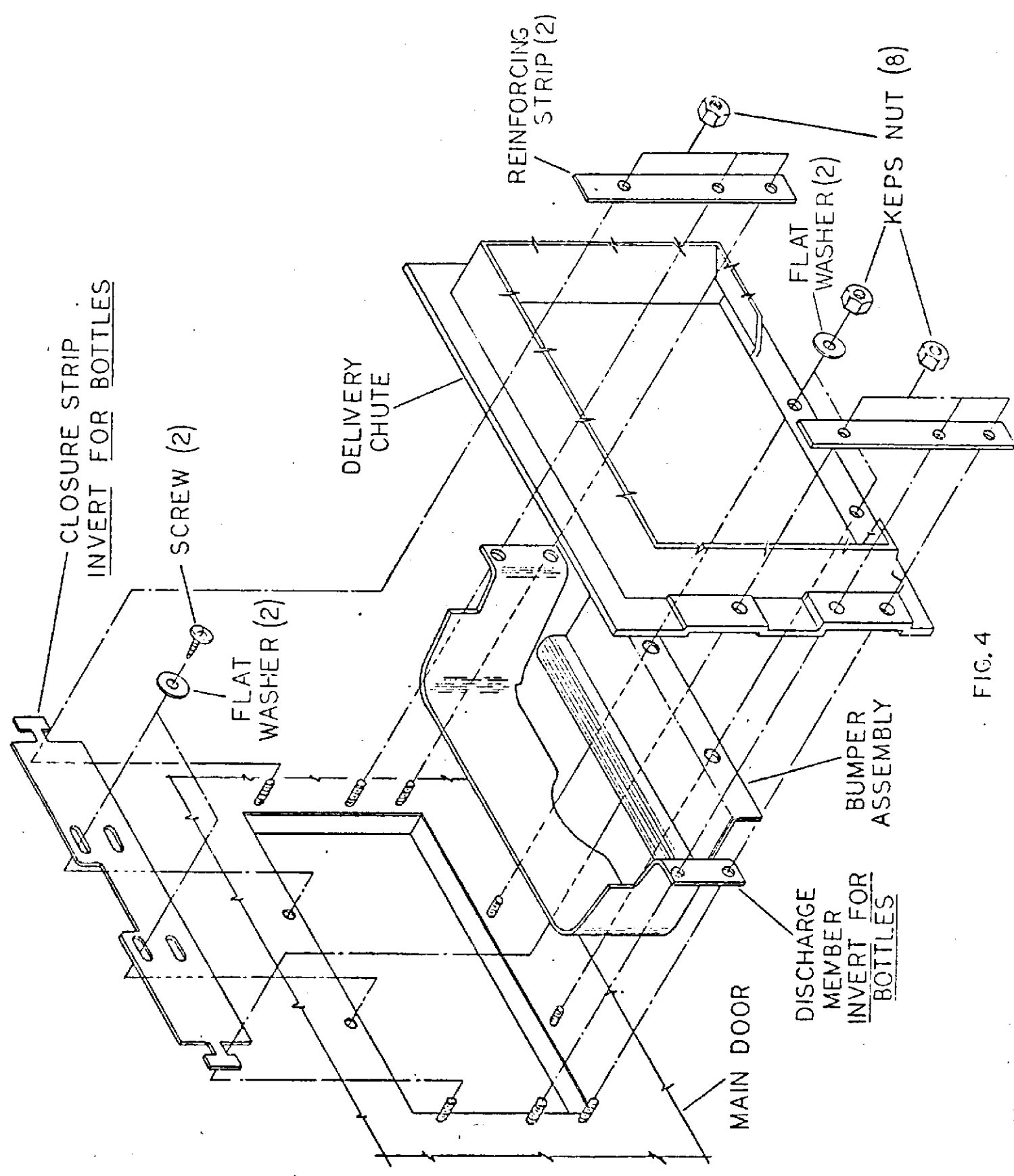


FIG. 4